

产品展示 Product Exhibition



铝镍钴 AlNiCo

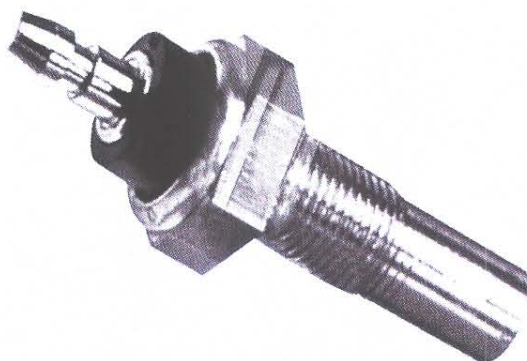
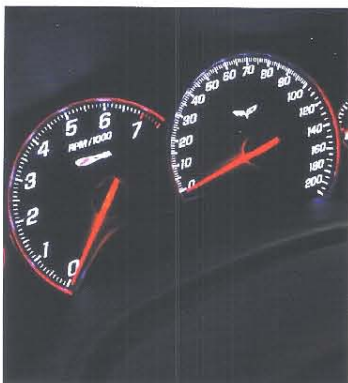
铝镍钴永磁体：是由金属铝、镍、钴、铁和其他微量元素构成的一种合金。铝镍钴永磁有两种不同的生产工艺：铸造和烧结。铸造工艺可以加工生产成不同的尺寸和形状；与铸造工艺相比，烧结产品局限于小的尺寸，其生产出来的毛坯尺寸公差比铸造产品还要好，磁性能要略低于铸造产品，但可加工性要好。

AlNiCo materials is comprised of aluminum, nickel, cobalt and iron with varying additions of other elements. There are two different manufacturing processes for AlNiCo: Cast and sintered. Cast AlNiCo can be made into many sizes and shapes, whereas Sintered Alnico is usually restricted to smaller sizes. However, both processes lead themselves to complex geometries and configurations. Standard Sintered AlNiCo has tighter dimensional tolerances due to its processing. It also has slightly lower magnetic properties, but better mechanical strength than Cast AlNiCo products.

铸造铝镍钴生产工艺流程图 Production Chart of Cast AlNiCo



特点	Characteristics	应用	Application
结晶致密，强度高	Compact crystal, high intensity	马达	Motors
抗腐蚀能力强	Good chemistry stability, strong anti-corrosion	仪表	Meters
成分均匀，磁特性优秀	Even elements, excellent and magnetic performance	里程表	Odometers
良好的温度稳定性	Excellent temperature stability	喇叭	Speakers
最高使用温度达到550° C	Highest usage temperature reach 550° C	传感器	Sensors
		电话	Telephones
		移动电话	Mobile
		其它	Others





产品展示 Product Exhibition

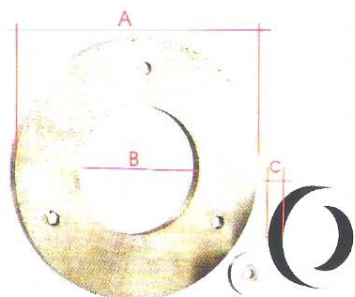
铸造铝镍钴 Cast AlNiCo



铸造铝镍钴的磁性能 Magnetic and Physical Properties of Cast AlNiCo Magnet

牌号 Grades	美国标准 Equivalent MMPA Class	剩磁 Remanence		矫顽力 Coercive Force		最大磁能积 Maximum Energy Product		密度 Density g/cm ³	可逆温度系数 Reversible Temp. Coefficient α (Br) %/°C	可逆温度系数 Reversible Temp. Coefficient α (Hc) %/°C	居里温度 Curie Temp. TC °C	最高工作温度 Temp. Coefficient TW °C	备注 Remark
		mT	Gs	KA/m	Oe	KJ/m ³	MGOe						
LN10	ALNICO3	600	6000	40	500	10	1.2	6.9	-0.03	-0.02	810	450	各向同性 Isotropy
LN13	ALNICO2	700	7000	48	600	12.8	1.6	7.2	-0.03	+0.02	810	450	
LN18	ALNICO8	580	5800	100	1250	18	2.2	7.3	-0.025	+0.02	860	550	
LN37		1200	12000	48	600	37	4.65	7.3					
LN40	ALNICO5	1250	12500	48	600	40	5	7.3					
LN44		1250	12500	52	650	44	5.5	7.3	-0.02	+0.02	850	525	
LN52	ALNICO5DC	1300	13000	56	700	52	6.5	7.3					
LN60	ALNICO5-7	1350	13500	59	740	60	7.5	7.3					
LN28	ALNICO6	1000	10000	57.6	720	28	3.5	7.3	-0.02	+0.03	850	525	各向异性 Anisotropy
LN36J	ALNICO8HC	700	7000	140	1750	36	4.5	7.3	-0.025	+0.02	860	550	
LN38		800	8000	110	1380	38	4.75	7.3	-0.025		860	550	
LN40	ALNICO8	820	8200	110	1380	40	5	7.3	-0.025	+0.02	860	550	
LN60		950	9500	110	1380	60	7.5	7.3	-0.025		860	550	
LN72	ALNICO9	1050	10500	112	1400	72	9	7.3	-0.025	+0.02	860	550	

产品展示 Product Exhibition



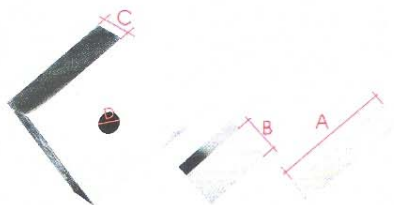
工厂型号 Part No	牌号 Grades	尺寸 Dimensions			应用范围 Application	
		A (mm)	B (mm)	C (mm)		
3223	LN10	23	4	6	里程表	Odometers
3224	LN10	25	5	6	里程表	Odometers
3225	LN10	23	3.5	6	里程表	Odometers
20001	LNG13	51	5	5	仪表	Meters
20005	LNG13	218	10	146	港口机械	Port Machines
38103	LN10	142	9	70	港口机械	Port Machines
58046	LNG40	101.6	40	76.2	扬声器	Speakers
58048	LNG40	50.8	25.4	38.1	电机	Motors
58337	LNG40	101.6	38.1	76.2	扬声器	Speakers



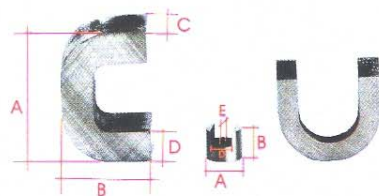
工厂型号 Part No	牌号 Grades	尺寸 Dimensions		应用范围 Application	
		A(mm)	B(mm)		
50154	LNG40	1.57	9.525	微机电机	Micro-motors
50207	LNG40	1.7	12	微机电机	Micro-motors
50007	LNG40	3.175	12.7	微机电机	Micro-motors
50260	LNG40	4	15	传感器	Sensors
50013/50341/50008/50033/50012/50001	LNG40	5	10/15/17/18/20/25.4	传感器	Sensors
52002/51025/50304	LNG40	6	25/30/100	传感器	Sensors
50116/50058	LNG40	6.35	25.4/31.75	传感器	Sensors
50021	LNG40	7	30	传感器	Sensors
50264/50032/50088/50203/50411	LNG40	8	20/25/30/50/150	传感器	Sensors
30115	LN10	9	5	仪表	Meters
52053/50080/50096	LNG40	9.525	25.4/38.1/63.5	传感器	Sensors
50366/50282/51070/50016/50368	LNG40	10	10/12/15/30/140	传感器	Sensors
50325	LNG52	10	28	传感器	Sensors
30107	LN10	10.4	8	仪表	Meters
50444	LNG40	11	50	传感器	Sensors
52006/52054	LNG40	12	30/50	传感器	Sensors
54180/59047	LNG40	12.7	50.8/76.2	牛号	Cows
50420/50042/54139	LNG40	13	10/12/15	喇叭	Speaker
54142	LNG40	25	20	器件	Assembly
54175	LNG52	38	16	天平	Balances



产品展示 Product Exhibition



工厂型号 Part No	牌号 Grades	尺寸 Dimensions A (mm) B (mm) C (mm) D (mm)				应用范围 Application
56007	LNG37	63.5	12.7	3.1/5		乐器 Musical Instruments
56008	LNG37	58	12.6	3		乐器 Musical Instruments
56022	LNG37	60	12.7	3		乐器 Musical Instruments
56032	LNG37	25.4	6.35	6.35		传感器 Sensors
56089	LNG37	22.5	4.3	4.3		传感器 Sensors
56099	LNG44	69	25	25	15	吸盘 Magnetic Chucks
56101	LNG37	62	13	3		乐器 Musical Instruments
56109	LNG40	75	15	10		教学 Education
56111	LNG37	19	3.2	3.2		传感器 Sensors
56133	LNG37	150	16	6		教学 Education
56190	LNG40	25	22.5	7		电表 Meters
56191	LNG40	25	22	7	R4	电表 Meters
56226	LNG40	42	42	20	6.5	吸盘 Magnetic Chucks
56306	LNG37	45	20	15	7	吸盘 Magnetic Chucks
56328	LNG37	50	20	20	7	吸盘 Magnetic Chucks
90017	LNGT72	50	50	40		吸盘 Magnetic Chucks
56369	LNG52	45	24	15		吸盘 Magnetic Chucks
56382	LNG52	45	22.5	15		吸盘 Magnetic Chucks
56252	LNG40	59.5	59.5	25	11	吸盘 Magnetic Chucks
59179	LNG40	45	18.5	30.5		磁性底座 Magnetic Bases
59154	LNG40	53	19.3	32		磁性底座 Magnetic Bases



工厂型号 Part No	牌号 Grades	尺寸 Dimensions A (mm) B (mm) C (mm) D (mm) E (mm)					应用范围 Application
57003	LNG37	42	20	30	10		搅拌机 Blender
57012	LNG37	55	11	13.4	16		电表 Meters
57036	LNG37	28.6	7.6	25.4	8		教学 Education
57038	LNG37	30	20	20	7.5	D5	吸盘 Holding
57039	LNG37	45	30	30	11	D5	吸盘 Holding
57040	LNG37	25.4	15.9		5.6	D4.8	吸盘 Holding
57041	LNG37	19.05	12.7		5.6	D4.8	吸盘 Holding
57042	LNG37	31.75	25.4		7.94	D7.1	吸盘 Holding
57044	LNG37	40	25	25	10		吸盘 Holding
57122	LNG37	39.6	25.4	25.4	10.3	D5.5	吸盘 Holding
57131	LNG37	63.5	47.6	46	14.3	D4.8	吸盘 Holding
57136	LNG37	69.8	57.1	41.3	14.3	2XD7.9	吸盘 Holding
57167	LNG37	64	12	26	14		吸盘 Holding
57187	LNG37	17	22	10	6.25		电表 Meters
57197	LNG37	62	26	61	13		教学 Education
57250	LNG37	21	13.1	16.2	6.2		电表 Meters



烧结铝镍钴 Sintered AlNiCo



烧结铝镍钴生产工艺流程图 Production Chart of Sintered AlNiCo



烧结铝镍钴的磁性能 Magnetic and Physical Properties of Sintered AlNiCo Magnet

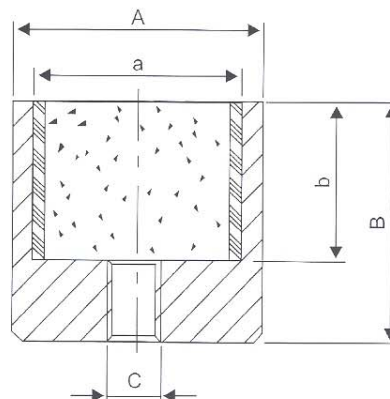
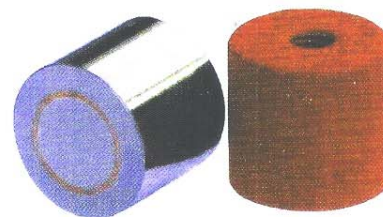
牌号 Grades	美国标准 Equivalent MMPA Class	剩磁 Remanence		矫顽力 Coercive Force		矫顽力 Coercive Force		最大磁能积 Maximum Energy Product		密度 Density	可逆温度系数 Reversible Temp. Coefficient	居里温度 Curie Temp.	最高工作温度 Temp. Coefficient	备注 Remark
		Br	Gs	Hcb	KOe	Hcb	Oe	KJ/m ³	MGOe					
		mT		KA/m		KA/m								
SLN8	Alnico3	520	5200	43	540	40	500	8-10	1.0-1.25	6.8	-0.02	760	450	各向同性 Isotropy
SLNG12	Alnico2	700	7000	43	540	40	500	12-14	1.5-1.75	7.0	-0.014	810	450	
SLNGT18	Alnico8	600	6000	107	1350	95	1200	18-22	2.25-2.75	7.2	-0.02	850	550	
SLNGT28	Alnico6	1000	10000	57	710	56	700	28-30	3.5-3.8	7.2	-0.02	850	550	
SLNG34	Alnico5	1100	11000	51	640	50	630	34-38	3.5-4.15	7.2	-0.016	850	550	各向异性 Anisotropy
SLNGT31		780	7800	106	1130	104	1300	33-36	3.9-4.5	7.2	-0.02	850	550	
SLNGT38	Alnico8	800	8000	126	1580	123	1550	38-42	4.75-5.3	7.2	-0.02	850	550	
SLNGT42		880	8800	122	1530	120	1500	42-48	5.3-6.0	7.25	-0.02	850	550	
SLNGT38J	Alnico8HC	730	7300	163	2050	151	1900	38-40	4.75-5.0	7.2	-0.02	850	550	



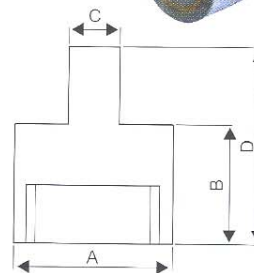
产品展示 Product Exhibition

磁性固定性 Holding magnets

Item Code	Material	POT			Magnet	Coated	Pull Force (N)
		A	B	C			
RC01-08	Fe37	8	8	M3	ALNiCo	Zn	5
RC01-9.5	Fe37	9.5	15	M3	ALNiCo	Zn	8
RC01-9.5A	Fe37	9.5	15.8	M3	ALNiCo	Zn	8
RC01-10	Fe37	10	10	M3	ALNiCo	Zn	8
RC01-12	Fe37	12	16	M5	ALNiCo	Zn	15
RC01-12A	Fe37	12	16	M5	ALNiCo	Red Paint	15
RC01-12B	Fe37	12	17	M3	ALNiCo	Zn	10
RC01-12C	Fe37	12	17	M4	ALNiCo	Zn	10
RC01-12.7	Fe37	12.7	15.8	M4	ALNiCo	Zn	15
RC01-12.7A	Fe37	12.7	15.8	M5	ALNiCo	Red Paint	15
RC01-16	Fe37	16	20	M4	ALNiCo	Zn	18
RC01-17	Fe37	17	20	M4	ALNiCo	Zn	18
RC01-17.5	Fe37	17.5	15.8	M6	ALNiCo	Zn	25
RC01-17.5A	Fe37	17.5	18	M6	ALNiCo	Red Paint	25
RC01-17.5B	Fe37	17.5	16	M6	ALNiCo	Zn	25
RC01-20	Fe37	20	24	M4	ALNiCo	Zn	42
RC01-20A	Fe37	20	24	M6	ALNiCo	Zn	42
RC01-20B	Fe37	20	16.2	M4	ALNiCo	Gr	42
RC01-20C	Fe37	20	24	M6	ALNiCo	Zn	42
RC01-20.6	Fe37	20.6	19	M6	ALNiCo	Zn	40
RC01-20.6A	Fe37	20.6	19	M6	ALNiCo	Red Paint	40
RC01-24	Fe37	24	30	M5	ALNiCo	Zn	80
RC01-25.4	Fe37	25.4	21	M10	ALNiCo	Zn	100
RC01-27	Fe37	27	25.4	M6	ALNiCo	Zn	60
RC01-27A	Fe37	27	25.4	M6	ALNiCo	Red Paint	60
RC01-27B	Fe37	27	25.4	M6	ALNiCo	Red Paint	60
RC01-27C	Fe37	27	25.4	10-32	ALNiCo	Red Paint	60
RC01-32	Fe37	32	40	M8	ALNiCo	Zn	180
RC01-35	Fe37	35	30	M8	ALNiCo	Zn	150
RC01-35A	Fe37	35	30	M8	ALNiCo	Zn	150
RC01-35B	Fe37	35	20	M6	ALNiCo	Zn	180
RC01-35C	Fe37	35	20	M6	ALNiCo	Red Paint	180
RC01-35D	Fe37	35	42	M6	ALNiCo	Zn	200
RC01-35E	Fe37	35	42	M10	ALNiCo	Zn	200
RC01-35F	Fe37	35	30.1	M6	ALNiCo	Zn	180
RC01-45	Fe37	45	30	M8	ALNiCo	Zn	250
RC01-45A	Fe37	45	30	M8	ALNiCo	Red Paint	250



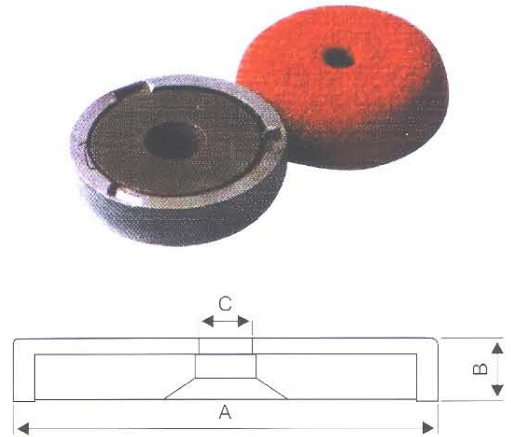
Item Code	Material	POT				Magnet	Coated
		A	B	C	D		
RC03-06	Fe37	6	20	3	28	ALNiCo	Zn
RC03-08	Fe37	8	20	3	28	ALNiCo	Zn
RC03-10	Fe37	10	20	4	28	ALNiCo	Zn
RC03-13	Fe37	13	20	4	28	ALNiCo	Zn
RC03-16	Fe37	16	20	5	28	ALNiCo	Zn
RC03-20	Fe37	20	25	6	33	ALNiCo	Zn
RC03-25	Fe37	25	35	8	45	ALNiCo	Zn
RC03-32	Fe37	32	40	10	50	ALNiCo	Zn
RC03-40	Fe37	40	50	15	70	ALNiCo	Zn
RC03-50	Fe37	50	60	18	85	ALNiCo	Zn
RC03-63	Fe37	63	65	20	95	ALNiCo	Zn



产品展示 Product Exhibition



Item Code	Material	POT			Magnet	Coated	Pull Force (N)
		A	B	C			
RC02-19	Fe37	19	7.75	M4	ALNiCo	Red Paint	4
RC02-19A	Fe37	19	7.75	M4	ALNiCo	Zn	4
RC02-19B	Fe37	19	8	M4	ALNiCo	Red Paint	4
RC02-19C	Fe37	19	7.75	M4	ALNiCo	Zn	4
RC02-19D	Fe37	19.1	8	Φ4.2	ALNiCo	Zn	4
RC02-28.5	Fe37	28.5	8.75	M6	ALNiCo	Red Paint	6.5
RC02-28.5A	Fe37	28.5	8.75	M6	ALNiCo	Zn	6.5
RC02-28.5B	Fe37	28.5	8.75	M6	ALNiCo	Red Paint	6.5
RC02-28.5C	Fe37	28.5	8.75	M6	ALNiCo	Zn	6.5
RC02-29	Fe37	28.8	8.8	Φ5	ALNiCo	Zn	7
RC02-38	Fe37	38	10.6	M5	ALNiCo	Zn	12.5
RC02-40	Fe37	40	10.5	M6	ALNiCo	Red Paint	12.5
RC02-40A	Fe37	40	10.5	M6	ALNiCo	Zn	12.5
RC02-40B	Fe37	40	10.5	M6	ALNiCo	Red Paint	12.5
RC02-40C	Fe37	40	10.5	M6	ALNiCo	Zn	12.5



Item Code	Material	POT		Magnet	Coated	Pull Force (N)
		A	B			
RC04-06	Fe37	6	6	ALNiCo	Ni	1.4
RC04-06A	Fe37	6	10	ALNiCo	Zn	1.4
RC04-06B	Fe37	6	12	ALNiCo	Zn	2
RC04-06C	Fe37	6	7	ALNiCo	Cr	2
RC04-06D	Fe37	6	20	ALNiCo	Zn	
RC04-6.5	Fe37	6.5	19	ALNiCo	Zn	
RC04-08	Fe37	8	8	ALNiCo	Zn	3.5
RC04-08A	Fe37	8	12	ALNiCo	Cr	3.5
RC04-08B	Fe37	8	10	ALNiCo	Zn	3
RC04-10	Fe37	10	10	ALNiCo	Zn	8.5
RC04-10A	Fe37	10	16	ALNiCo	Zn	8.5
RC04-12	Fe37	12	16	ALNiCo	Zn	8.5
RC04-12.7	Fe37	12.7	13	ALNiCo	Zn	10
RC04-13	Fe37	13	18	ALNiCo	Zn	12
RC04-15	Fe37	15	20	ALNiCo	Zn	20
RC04-16	Fe37	16	20	ALNiCo	Zn	20
RC04-17.5	Fe37	17.5	16	ALNiCo	Zn	22
RC04-17.5A	Fe37	17.5	11	ALNiCo	Zn	
RC04-20	Fe37	20	24	ALNiCo	Zn	35
RC04-20A	Fe37	20	25	ALNiCo	Zn	45
RC04-20.6	Fe37	20.6	19	ALNiCo	Zn	35
RC04-25	Fe37	25	30	ALNiCo	Zn	100
RC04-27	Fe37	27	25.4	ALNiCo	Zn	65
RC04-32	Fe37	32	35	ALNiCo	Zn	190
RC04-32A	Fe37	32	40	ALNiCo	Zn	180
RC04-35	Fe37	35	20	ALNiCo	Zn	140
RC04-35A	Fe37	35	30	ALNiCo	Zn	142
RC04-40	Fe37	40	45	ALNiCo	Zn	240
RC04-45	Fe37	45	30	ALNiCo	Zn	300
RC04-50	Fe37	50	40	ALNiCo	Zn	400
RC04-50A	Fe37	50	50	ALNiCo	Zn	420
RC04-63	Fe37	63	60	ALNiCo	Zn	660

